

UltraHorn Directional Antennas UH-TP-5-24

**Kode** : UH-TP-5-24**Kategori** : RF elements**Harga** : Rp 6.500.000,00
Rp 8.775.000,00

UltraHorn Directional Antennas UH-TP-5-24. Ultimate Noise Rejecting Directional Antenna. UltraHorn TP antennas are highly directional scalar horn antennas. They offer all the benefits of scalar horns: ultra noise rejection, lossless connection of radio and symmetrical beam with no side lobes. These unique radiation properties make them excellent antennas for long links in environments with a high level of noise.

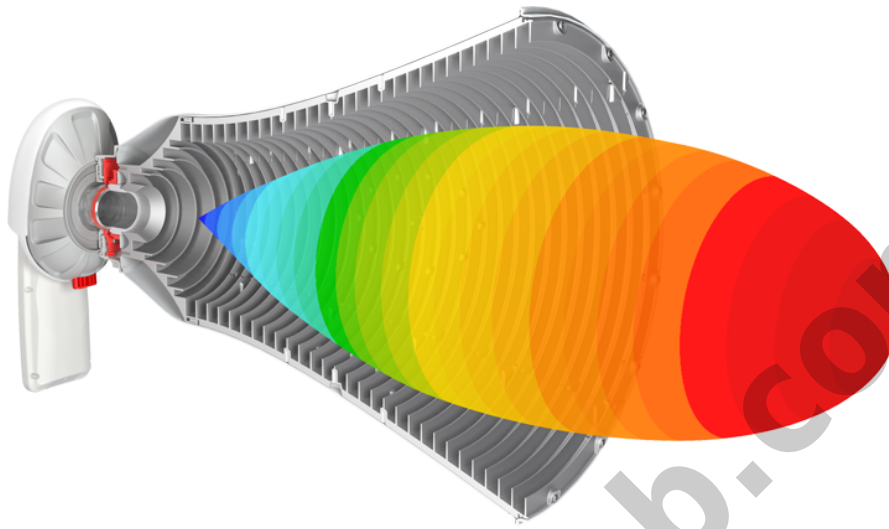
Ultimate Noise Rejecting Horn Antenna

UltraHorn TP antennas are highly directional scalar horn antennas. They offer all the benefits of scalar horns: ultra noise rejection, lossless connection of radio and symmetrical beam with no side lobes. These unique radiation properties make them excellent antennas for long links in environments with a high level of noise.



Unique Beam Without Side Lobes

UltraHorn TP antennas are truly directional antennas: signal is focused only to a main beam without any side lobes. Precise radiation patterns of UltraHorn TP antennas allow you to create long links in high noise environment with unprecedented performance. The optimal beamwidth makes aiming very simple compared to other point-to-point antennas.



Ultimate Noise Rejection

UltraHorn TP antennas do not have side lobes which allows them to reject noise. Side radiation is directly related to noise: radios transmit and also receive interference from unwanted directions. Side lobes from most mainstream point-to-point antennas are huge, sometimes almost half the size of the main lobe and thus having a huge impact on overall performance. UltraHorn TP antennas receive significantly less noise allowing them to achieve amazing performance in noisy environments.

Radiation Patterns

Zero Loss

UltraHorn TP Antennas feature our industry changing TwistPort connector, a patent pending quicklocking waveguide port.

There are no coaxial RF connectors or RF cables anymore that makes TwistPort virtually lossless connector.

Connection of radio is brilliantly simple - "twist and lock" - all done with one hand!



Performance

How far can I get with this antenna? There is no simple answer to this question. Easy Link calculator below will help you find the answer.

For a more precise link calculation, please use our [Link calculator](#).

High Gain Across 5 and 6 GHz Spectrum

UltraHorn UH-TP-5-24 performs with 24dBi of gain across an ultra-wideband spectrum: 5180-6775 MHz. In combination with narrow beam width and 99% beam efficiency, UltraHorn TP antennas bring amazing link performance even when compared to competitive products with higher nominal gain.

No Accessories Needed

UltraHorn TP antennas come as a complete antenna solution for a point-to-point link. There is no need to spend more money for radomes or shrouds. No extra costs for additional shielding that burdens the tower and does not work properly. UltraHorn TP antennas have everything. Just buy an appropriate TwistPort Adaptor to connect your radio and deploy.

That's it!



Innovative Mounting System

UltraHorn TP antennas feature our newest innovative mounting system that makes antenna installation an easy task. The mount is completely separated from the antenna so first install just the bracket on the pole and then simply slide the antenna on the bracket. Thanks to this mounting system, adjustment is quick and easy as well. The optimal beam shape makes aiming very simple compared to mainstream parabolic dish point-to-point antennas.

Specifications :

| | |
|--------------------------------------|--|
| Antenna Connection | TwistPort™ - Quick Locking Waveguide Port |
| Antenna Type | Horn |
| Materials | UV Resistant ABS Plastic, Polycarbonate, Polypropylene, Aluminium, Stainless Steel |
| Enviromental | IP55 |
| Pole Mounting Diameter | 30-80 mm (recommend as close to 80 mm as possible) |
| Temperature | -30 °C to + 55 °C (-22 °F to + 131 °F) |
| Wind Survival | 160 km/hour |
| Wind Loading | 150/104 N - Front/Side at 160 km/hour |
| Effective Projected Area | 1231/849 cm ² - Front/Side (190.8/131.6 in ²) |
| Weight | 8.2 kg / 18 lbs - single unit |
| | 9.2 kg / 20 lbs - single unit incl. package |
| Dimensions | Retail Box: 55 x 55 x 66.6 cm |
| PERFORMANCE | |
| Gain | 24 dBi |
| Frequency Range | 5180 - 6775 MHz |
| Azimuth Beam Width -3 dB | H 11° / V 11° |
| Elevation Beam Width -3 dB | H 11° / V 11° |
| Azimuth Beam Width -6 dB | H 16° / V 15° |
| Elevation Beam Width -6 dB | H 16° / V 15° |
| Beam Efficiency* | 99 % |
| Front-to-Back Ratio (Min) | 40 dB |
| COMPATIBLE WIRELESS PLATFORMS | |
| RF elements® | any TwistPort Adaptor |

[Download DataSheet](#)

[Download UserGuide](#)

[Link calculator](#)

* Harga, spesifikasi, dan ketersediaan bisa berubah dan tidak mengikat

URL : <https://www.citraweb.com/produk/972/>

Informasi lebih lanjut, pemesanan dan pembelian, hubungi: 0274-554444 atau email sales@citraweb.com