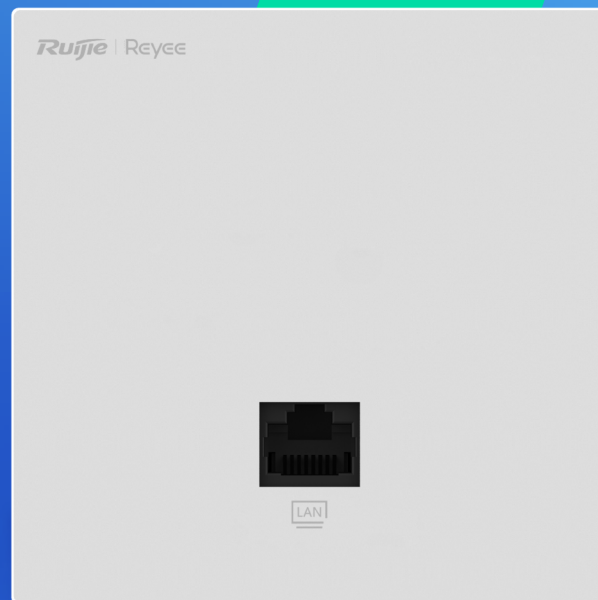


RG-RAP1201

Reyee Wi-Fi 5 1267 Mbps Wall-mounted Access Point

DATASHEET



Highlights

- Dual-radio performance, AC1300 wireless wall-mounted AP
- Better experience with MU-MIMO under 802.11ac Wave2
- Easy installation, worldwide compatible
- One click to optimize, get better Wi-Fi experience
- Easily set up your Wi-Fi network in 3 minutes

Highlight Features

Dual-Radio Performance, Gigabit Wall-mounted Access Point

Interface Application

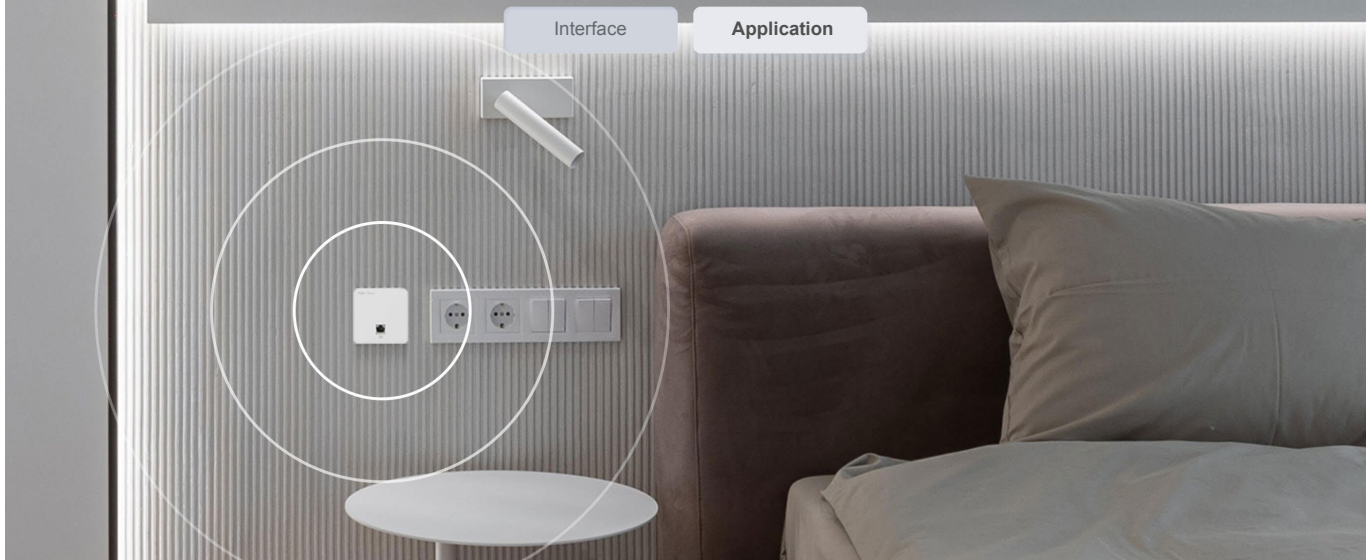


1267 Mbps

802.11ac Wave2 Full GE Ports 2x2 MIMO 2x2 MU-MIMO 86mm Design Free Cloud Management

Detailed description: This block features a central image of a white Ruijie Reyee wall-mounted access point. Above the device are two tabs labeled 'Interface' and 'Application'. The device is shown on a white cylindrical pedestal. Large text '1267 Mbps' is displayed behind the device. Below the device, there are six feature icons with corresponding text: a Wi-Fi icon for '802.11ac Wave2', a network port icon for 'Full GE Ports', a '2x2 MIMO' icon, a '2x2 MU-MIMO' icon, a thin device icon for '86mm Design', and a cloud management icon for 'Free Cloud Management'.

Dual-Radio Performance, Gigabit Wall-mounted Access Point



Better Experience with MU-MIMO under 802.11ac Wave2

Dual Band

802.11ac Wave2	1267Mbps
11n	450Mbps

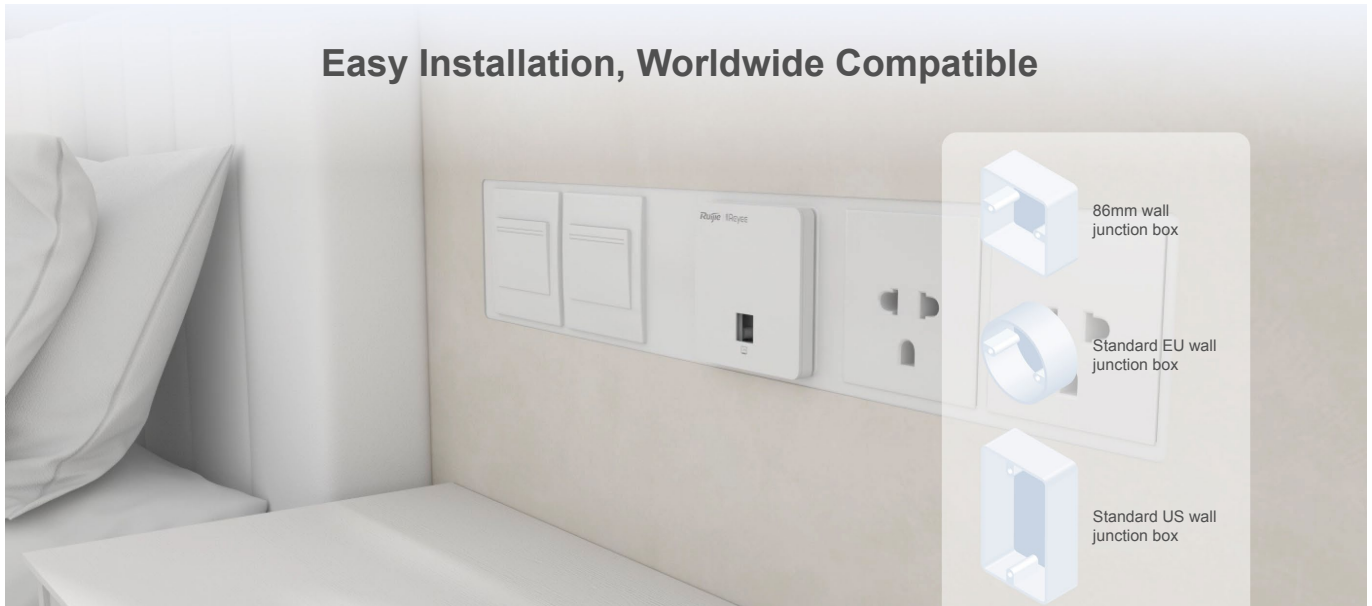


MU-MIMO

Detailed description: This block illustrates the performance of MU-MIMO. At the top left, a 'Dual Band' comparison shows '802.11ac Wave2' with a blue bar reaching '1267Mbps' and '11n' with a shorter bar reaching '450Mbps'. In the center is the Ruijie Reyee wall-mounted access point. Below it is a diagram of a dome-shaped signal area labeled 'MU-MIMO'. Dashed lines connect the access point to several icons representing different devices: a smartphone, a printer, a game controller, a desktop monitor, and a tablet.

Highlight Features

Easy Installation, Worldwide Compatible



One Click to Optimize, Get better Wi-Fi Experience

The WIO (WiFi Intelligent Optimization) technology allows you to optimize wireless network by one click.



Easily Set Up Your Wi-Fi Network in 3 Minutes

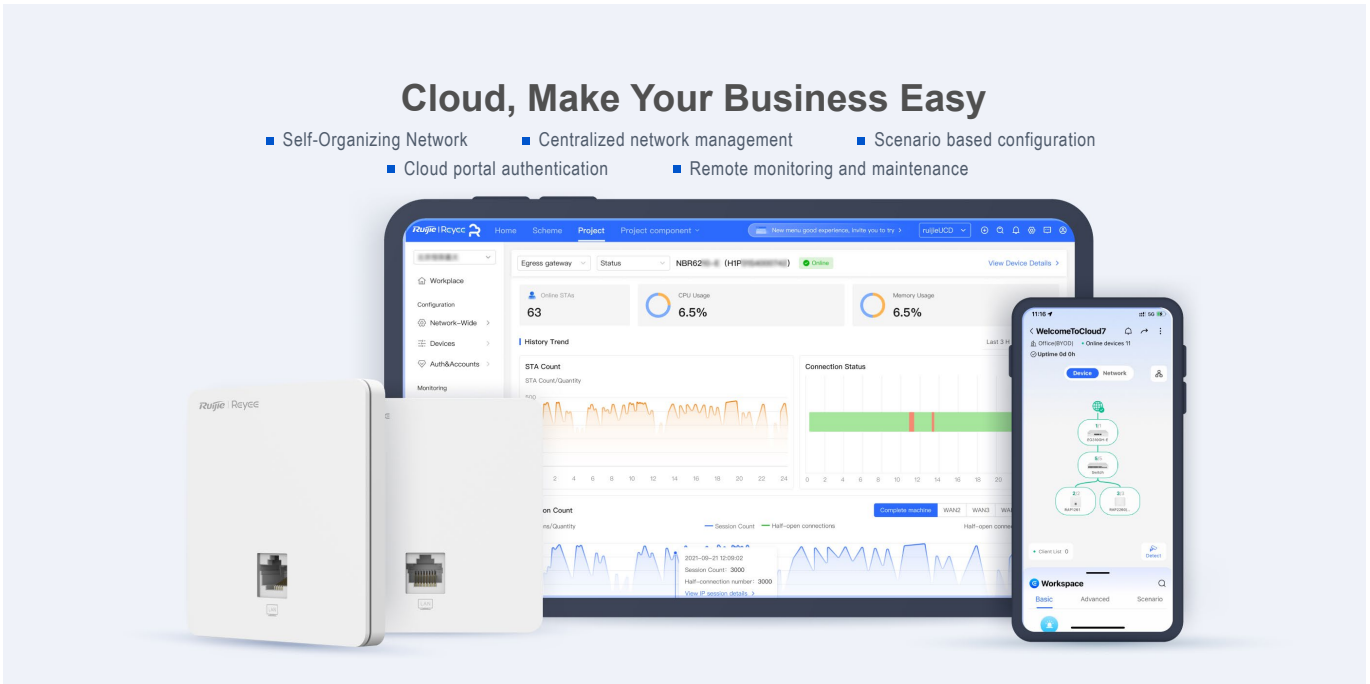
With SON (Self-organizing Network) technology, easily set up a whole Wi-Fi network by Ruijie Cloud APP



Highlight Features

Cloud, Make Your Business Easy

- Self-Organizing Network
- Centralized network management
- Scenario based configuration
- Cloud portal authentication
- Remote monitoring and maintenance



Specifications

Hardware Specifications

Model	RG-RAP1200(P)	RG-RAP1200(F)	RG-RAP1201
Radio	Dual-stream Dual-band		
Protocol	Concurrent 802.11ac Wave2, Wave1, 802.11a/b/g/n		
Operating Bands	802.11b/g/n: 2.4 GHz ~ 2.4835 GHz 802.11a/n/ac: 5 GHz: 5.150 GHz ~ 5.350 GHz, 5.725 GHz ~ 5.850 GHz. (Note:The operating bands vary according to different countries)		
Antenna	Built-in Antenna (2.4 GHz: 2 dBi, 5 GHz: 2 dBi)		
Spatial Streams	2.4 GHz: 2x2 MIMO 5 GHz: 2x2 MIMO		
Max Throughput	2.4 GHz: up to 400 Mbps 5 GHz: up to 867 Mbps Access rate per AP: 1.267 Gbps		
Modulation	OFDM: BPSK@6/9 Mbps, QPSK@12/18 Mbps, 16-QAM@24 Mbps, 64-QAM@48/54 Mbps DSSS: DBPSK@1 Mbps, DQPSK@2 Mbps, and CCK@5.5/11 Mbps MIMO-OFDM: BPSK, QPSK, 16QAM, 64QAM and 256QAM		
Receive Sensitivity	11b: -91 dBm(1 Mbps), -88 dBm(5 Mbps), -85 dBm(11 Mbps) 11a/g: -89 dBm(6 Mbps), -80 dBm(24 Mbps), -76 dBm(36 Mbps), -71 dBm(54 Mbps) 11n: -83 dBm@MCS0, -65 dBm@MCS7, -83 dBm@MCS8, -65 dBm@MCS15 11ac HT20: -83 dBm(MCS0), -57 dBm(MCS9) 11ac HT40: -79 dBm(MCS0), -57 dBm(MCS9) 11ac HT80: -76 dBm(MCS0), -51 dBm(MCS9)		

EIRP:

≤ 21.8 dBm (2.4 GHz)

≤ 22.1 dBm (5 GHz)

CE

≤ 20 dBm (2.4 GHz)

≤ 27 dBm (5 GHz)

Myamar:

2400 MHz - 2483.5 MHz ≤ 20 dBm

5150 MHz - 5350 MHz ≤ 23 dBm

5470 MHz - 5850 MHz ≤ 25 dBm

Thailand:

2400 MHz - 2483.5 MHz ≤ 20 dBm

5150 MHz - 5350 MHz ≤ 23 dBm

5470 MHz - 5725 MHz ≤ 25 dBm

5725 MHz - 5850 MHz ≤ 30 dBm

Note: The transmit power is subject to country-specific regulations.

Maximum Transmit Power

CE EIRP:

≤19 dBm (2.4 GHz)

≤18 dBm (5 GHz)

country-specific restrictions apply

Specifications

Hardware Specifications

Model	RG-RAP1200(P)	RG-RAP1200(F)	RG-RAP1201
Adjustable Power	Adjustable in 1 dB increments High (100%), Medium (75%), Low (50%), Very Low (25%)Support		
Dimensions	126 mm × 86 mm × 50 mm	86 mm × 86 mm × 29.3 mm	86 mm x 86 mm x 42.4 mm
Weight	0.24 kg	0.05 kg	0.14 kg
Service Ports	Front: 4 10/100/1000Base-T Ports, LAN1 supports IEEE.802.3af PoE OUT Rear: 1 10/100/1000Base-T (PoE in)	Front: 1 10/100Base-T Ports Rear: 1 10/100Base-T (PoE in)	Front: 1 10/100/1000Base-T Rear: 1 10/100/1000Base-T
LED Indicator	1 LED indicator		
Power Supply	Support PoE (802.3af/at)		
Power Consumption	≤ 8W		≤ 9W
Environment	Operating temperature: 0°C ~ 40°C		
	Storage temperature: -40°C ~ 70°C		
	Operating humidity: 0% ~ 100%(non-condensing)		Operating humidity: 5% ~ 95% (non-condensing)
	Storage humidity: 0% ~ 100%(non-condensing)		Storage humidity: 5% ~ 95% (non-condensing)
Installation	Wall plate installation		
Safety Standard	GB4943, IEC 62368-1		
EMC Standard	GB9254, EN301 489, EN50155, EN50121, EN55032, EN61000, EN55035		
Vibration Standard	IEC61373		
Radio Standard	SRRC certification, EN300 328, EN301 893		
MTBF	> 250000H		> 400000H

Software Features

Operating Mode	AP mode and routing mode		
----------------	--------------------------	--	--

Specifications

Software Features			
Model	RG-RAP1200(P)	RG-RAP1200(F)	RG-RAP1201
WLAN	Maximum number of clients: 110	Maximum number of clients: 110	Maximum number of clients: 110
	Recommended Clients: 80	Recommended Clients: 40	Recommended Clients: 40
	Up to 8 SSIDs		
	Support SSID hiding Configuring the authentication mode, encryption mechanism, and VLAN attributes for each SSID		
	SSID-based and radio-based STA limit		
	Support Layer 2 user isolation		
Roaming	Support Layer 2 and Layer 3 roaming		
Security	Support PSK authentication		
	Support static blacklist and whitelist		
	Support WPA (TKIP), WPA2 (AES), and WPA-PSK data encryption		
Routing	Support static IP address, DHCP, PPPoE Dial Up		
Management and maintenance	Support unified networking of all network equipment by SON Support local or remote management with Ruijie Reyee app Support local management with web Support remote management with Ruijie Cloud platform		

Ruijie | Rcycc

 **Redefine your easy network**

Copyright ©2000-2023 Ruijie Networks Co., Ltd. All rights reserved.

No part of this document may be reproduced or transmitted in any form or any means without prior written consent of Ruijie Networks Co., Ltd.

Notice

This content is applicable only to regions outside the China mainland. Ruijie Networks Co., Ltd. reserves the right to interpret this content.

The information contained herein is subject to change without notice. Nothing herein should be construed as constituting an additional warranty. Ruijie Networks Co., Ltd. shall not be liable for technical or editorial errors or omissions contained herein.



Ruijie Networks Co., Ltd.
Building 19, Juyuanzhou Industrial Park, No.618
Jinshan Road, Cangshan District, Fuzhou, Fujian, China
Website: <https://www.ruijienetworks.com>